



Executive Steering Committee (ESC) Update

Minnesota Eligibility Technology System (METS)

Greg Poehling | Director – Program Management Division, MNIT Services @
DHS/MNsure

December 20, 2016

12/20/2016

MNsure's Accessibility & Equal Opportunity (AEO) office can provide this information in accessible formats for individuals with disabilities. Additionally, the AEO office can provide information on disability rights and protections to access MNsure programs. The AEO office can be reached via 1-855-3MNSURE (1-855-366-7873) or AEO@MNsure.org.

- Winter Release
- Update on other roadmaps
- 2016 Accomplishments
- 2017 Release Planning
- Detailed Project Status Update

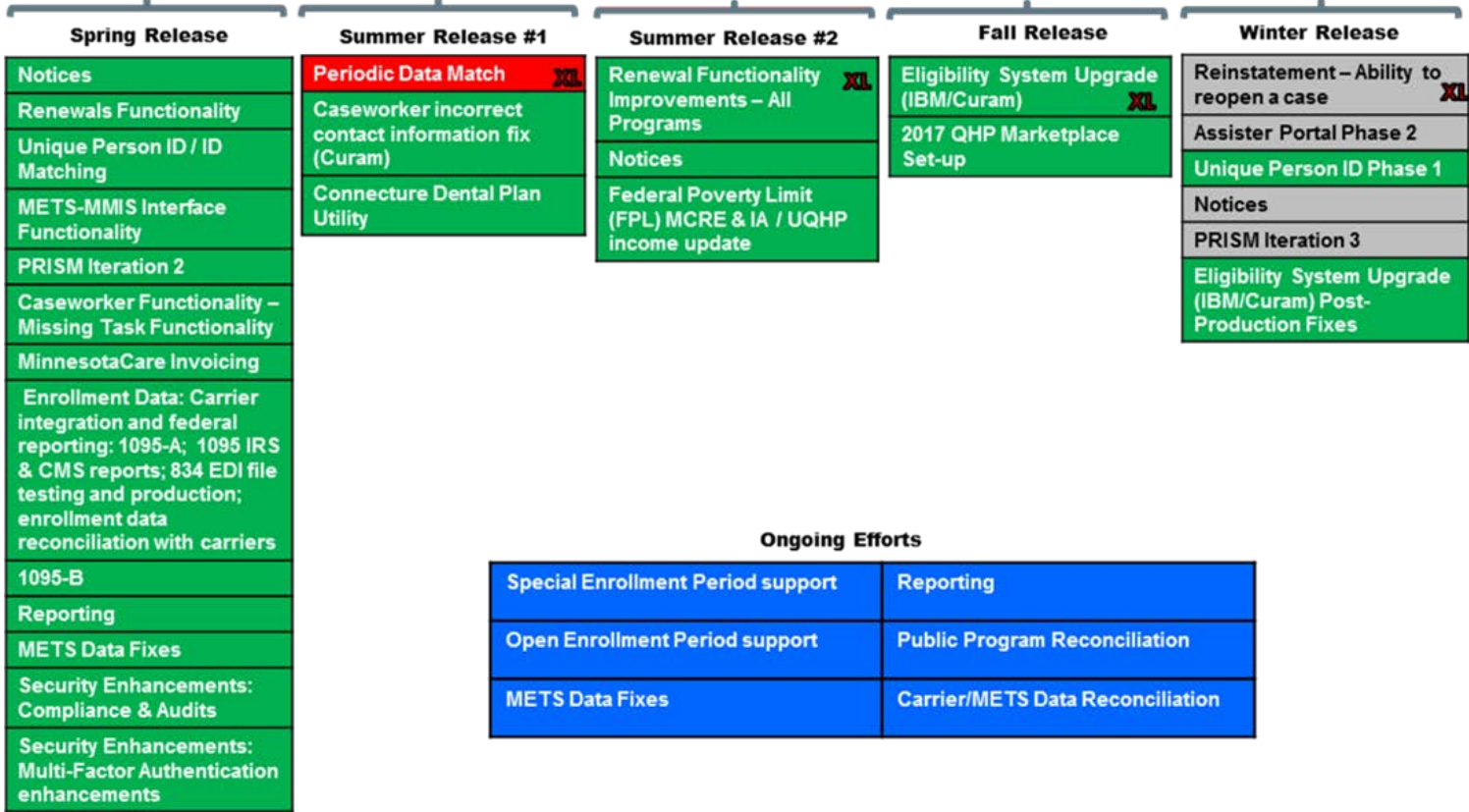
Winter Release Update

Winter Release Deployed December 17 2016

- Includes the following
 - Unique Person ID
 - Defect Fixes following Cúram Upgrade

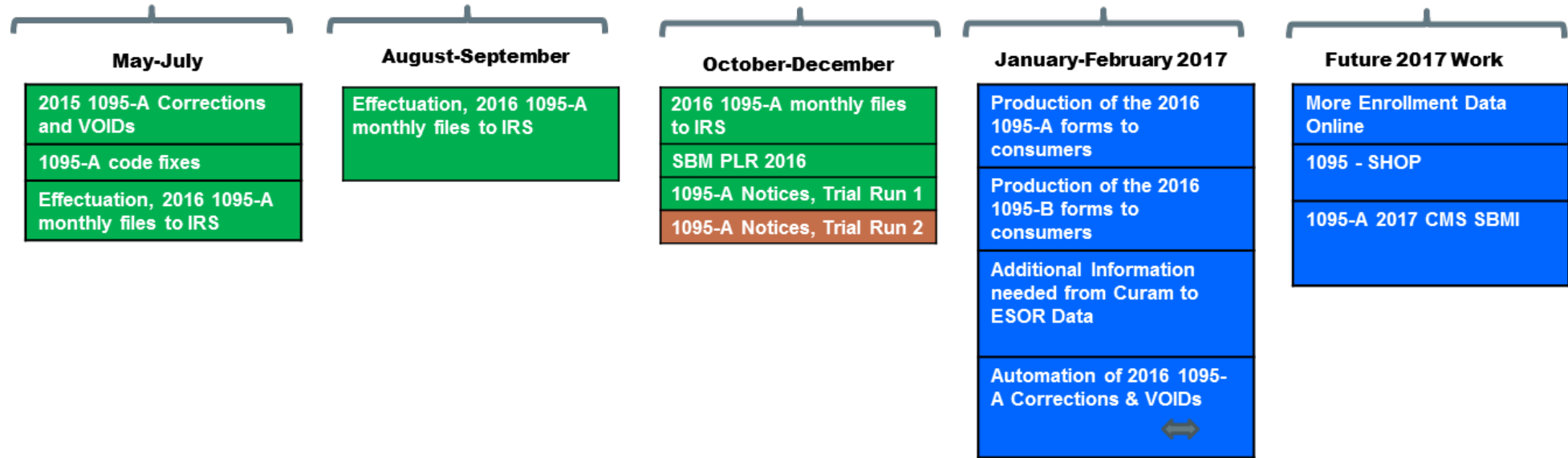
Work Incomplete
Work Completed
Work Currently Underway
Work on Hold
XL = "Mega Project"

2016 Release Roadmap



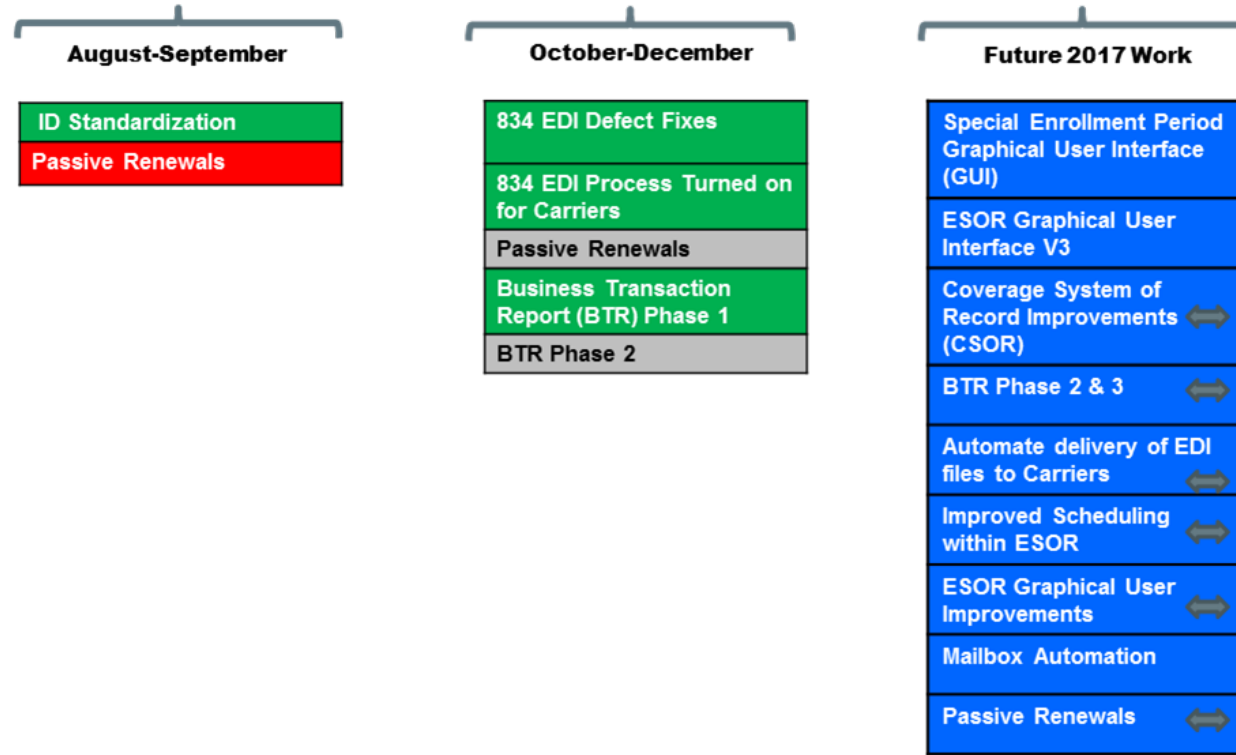
2016 IT Release Plan: 1095 Project Roadmap

Work Incomplete
Work Completed
Work Currently Underway
↔ Change in Timing
Work Deferred



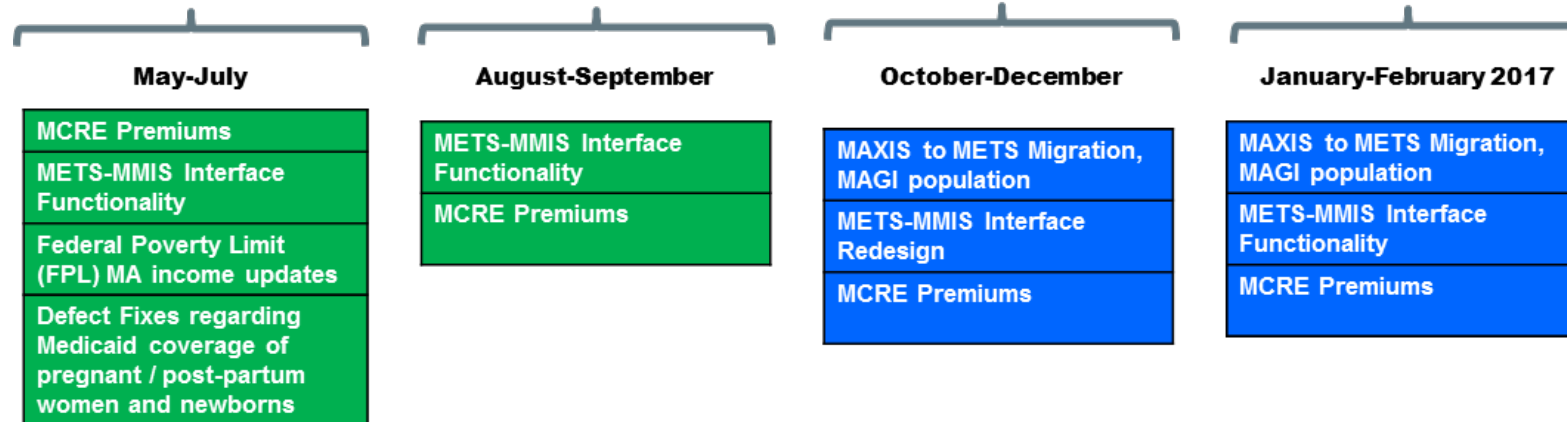
Work Incomplete
Work Completed
Work Currently Underway
↔ = Change in Timing
Work On Hold

2016 IT Release Plan: ESOR Project Roadmap



2016 IT Release Plan: Public Program Work

Work Incomplete
Work Completed
Work Currently Underway
XL = "Mega Project"



2016 Accomplishments

5 Releases in 2016

Two Extra Large Projects Completed: Renewals Functionality & Cúram Upgrade

Off-Cycle Efforts and Operational Support

2017 Planning

METS PMT held a retreat on November 17 focused on improving management of the METS portfolio and planning for 2017.

- Categorized METS Portfolio
 - PMT Prioritized Work/New Development
 - Non-Prioritized/Ongoing-Operational Work
- Prioritized Work for 2017
 - Utilized Continuous Improvement Scoring Tool to score and rank new development work
 - Decided to reserve 20% of capacity for METS defect resolution

2017 Planning

- MNIT determined Level of Effort (LOE) and Capacity for each prioritized and non-prioritized item to match available resources
- Used this information to determine Schedule for 2017 and Spring & Summer (17.1 & 17.2) Releases.
- Fall & Winter (17.3 & 17.4) Releases still being determined
- Ongoing Work will occur throughout the year

DRAFT 2017 Release Roadmap – METS Ongoing and Project Work

17.1 Release Spring	17.2 Release Summer-Under Consideration	17.3 Release Fall	17.4 Release Winter
Assister Portal	Annual Cúram Upgrade	TBD	TBD
Cost Sharing	Prep:	TBD	TBD
Notices	• Supervisor Workspace	TBD	TBD
PRISM Defects	• Org/Location Structure	TBD	TBD
Defects	Defects	Defects	Defects
	Passive Renewals		
	Notices		

Ongoing Efforts

1095-A Operations
1095-B Operations
Data Access and Management - Reports
Infrastructure Improvements
MAXIS to METS Migration
MCRE Premiums Phase 3
MCRE Premium Reconciliation
METS Data Fixes
METS-MMIS Interface Improvements
Periodic/Annual Work
Renewals Operations

Program Status

Project Name	Release	Scope	Schedule	Issue	Risk	Overall
1095 Projects	Off Cycle/ Non Dev	Green	Yellow	Green	Yellow	Yellow
1095-B Phase 2	Off Cycle/ Non Dev	Green	Green	Green	Yellow	Green
Carrier Reconciliation	Off Cycle/ Non Dev	Red	Red	Red	Yellow	Red
Compliance/ Audits	Off Cycle/ Non Dev	Green	Yellow	Yellow	Yellow	Yellow
Data Access & Management (Reports)	Off Cycle/ Non Dev	Green	Green	Green	Green	Green
ESOR Project	Off Cycle/ Non Dev	Green	Red	Yellow	Yellow	Red
Infrastructure Improvements	Off Cycle/ Non Dev	Green	Yellow	Green	Green	Yellow
MAXIS to METS Migration	Off Cycle/ Non Dev	Green	Green	Green	Green	Green
MCRE Premiums - Premium Reconciliation	Off Cycle/ Non Dev	Green	Green	Green	Green	Green
MCRE Premiums Phase 3	Off Cycle/ Non Dev	Green	Green	Green	Green	Green
METS/ MMIS Interface	Off Cycle/ Non Dev	Green	Yellow	Yellow	Green	Yellow
METS/Curam Data Work	Off Cycle/ Non Dev	Green	Green	Green	Green	Green
Program Reconciliation	Off Cycle/ Non Dev	Green	Green	Green	Green	Green
UE/UI Online Application	Off Cycle/ Non Dev	Green	Green	Green	Green	Green
Unique Person ID	16.5.1 Winter 2016	Green	Green	Green	Green	Green
METS Program Status as of 12/16/2016						